

TCA (#0480): Total of 325 orbits. $\lambda_o = 206^\circ$, $\lambda_g - \lambda_o = 284.8^\circ$, $\beta_g = 12.4^\circ$, $\Delta r = 3^\circ$, $\Delta \lambda_o = 20^\circ$.

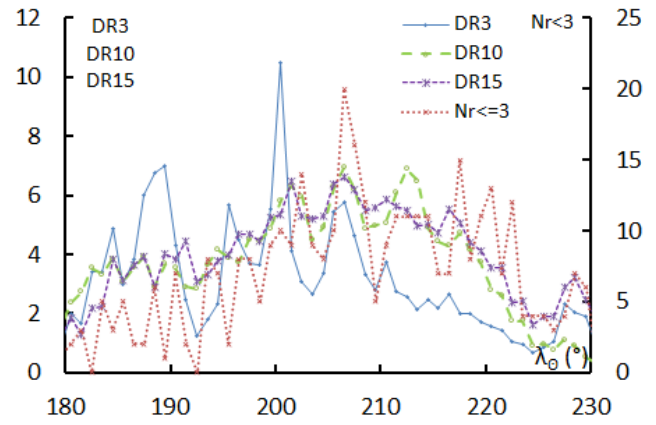
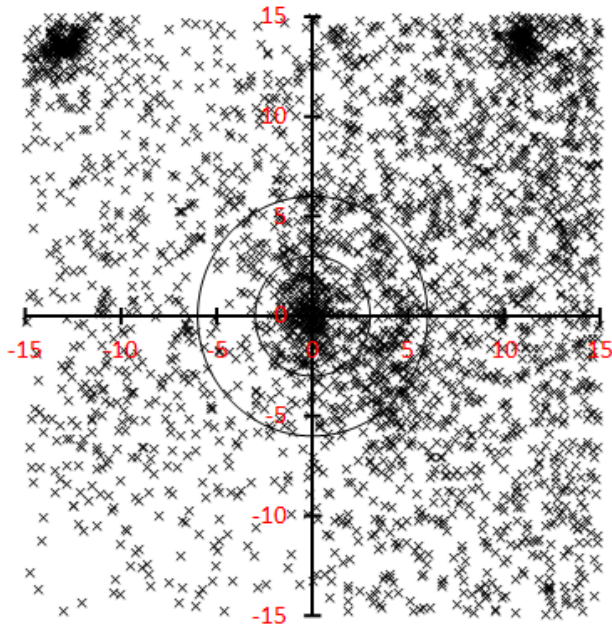


Table 1 – Number per year.

Year	N	Year	N
2007	21	2013	25
2008	17	2014	27
2009	34	2015	40
2010	11	2016	39
2011	20	2017	18
2012	32	2018	41

Table 2 – Activity profiles.

	λ_o	Max
Nr<=3	206.5	20.0
DR3	200.5	10.5
DR10	206.5	6.9
DR15	206.5	6.6

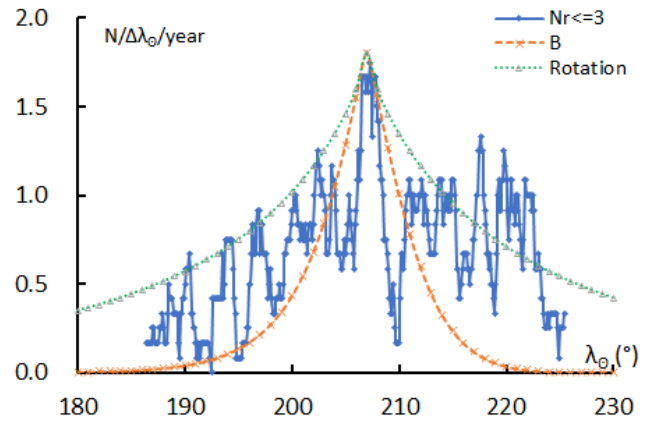


Table 3 – Evolution of the orbital parameters during the activity period.

λ_o	$\lambda_g - \lambda_o$	β_g	α_g	δ_g	v_g	e	q	i	ω	Ω	λ_{π}	β_{π}	a
180	289.8	6.8	112.5	28.7	66.7	0.877	0.683	166.4	108.4	180.0	71.1	12.9	5.57
181	289.5	7.0	113.4	28.8	66.7	0.874	0.688	166.0	109.1	181.0	71.4	13.2	5.47
182	289.3	7.2	114.3	28.9	66.7	0.871	0.694	165.6	109.7	182.0	71.7	13.6	5.38
183	289.1	7.5	115.3	29.0	66.7	0.868	0.699	165.2	110.4	183.0	71.9	13.9	5.29
184	288.9	7.7	116.2	29.1	66.7	0.865	0.705	164.8	111.1	184.0	72.2	14.2	5.21
185	288.7	7.9	117.1	29.1	66.8	0.862	0.711	164.4	111.8	185.0	72.4	14.4	5.13
186	288.5	8.1	118.0	29.2	66.8	0.859	0.716	164.0	112.5	186.0	72.6	14.7	5.06
187	288.3	8.3	119.0	29.3	66.8	0.856	0.722	163.6	113.3	187.0	72.9	15.0	5.00
188	288.0	8.6	119.9	29.3	66.8	0.853	0.728	163.3	114.0	188.0	73.1	15.3	4.94
189	287.8	8.8	120.8	29.4	66.8	0.850	0.733	162.9	114.7	189.0	73.3	15.5	4.88
190	287.6	9.0	121.7	29.5	66.8	0.847	0.739	162.5	115.5	190.0	73.5	15.8	4.83
191	287.4	9.2	122.6	29.5	66.8	0.844	0.745	162.1	116.2	191.0	73.6	16.0	4.78
192	287.2	9.4	123.6	29.5	66.9	0.842	0.750	161.7	117.0	192.0	73.8	16.2	4.74
193	287.0	9.7	124.5	29.6	66.9	0.839	0.756	161.4	117.7	193.0	74.0	16.4	4.70
194	286.8	9.9	125.4	29.6	66.9	0.837	0.761	161.0	118.5	194.0	74.1	16.6	4.66
195	286.5	10.1	126.3	29.6	66.9	0.834	0.767	160.6	119.3	195.0	74.3	16.8	4.63
196	286.3	10.3	127.3	29.7	66.9	0.832	0.773	160.3	120.1	196.0	74.4	17.0	4.60
197	286.1	10.5	128.2	29.7	66.9	0.830	0.778	159.9	120.9	197.0	74.5	17.2	4.57
198	285.9	10.7	129.1	29.7	66.9	0.828	0.784	159.5	121.7	198.0	74.6	17.3	4.54
199	285.7	11.0	130.0	29.7	67.0	0.825	0.789	159.2	122.5	199.0	74.7	17.5	4.52
200	285.5	11.2	130.9	29.7	67.0	0.823	0.795	158.8	123.3	200.0	74.8	17.6	4.50

Table 3 – Continued, evolution of the orbital parameters during the activity period.

λ_o	$\lambda_g - \lambda_o$	β_g	α_g	δ_g	v_g	e	q	i	ω	Ω	λ_{Π}	β_{Π}	a
201	285.2	11.4	131.9	29.7	67.0	0.822	0.800	158.4	124.1	201.0	74.9	17.7	4.48
202	285.0	11.6	132.8	29.7	67.0	0.820	0.805	158.1	125.0	202.0	75.0	17.8	4.47
203	284.8	11.8	133.7	29.7	67.0	0.818	0.811	157.7	125.8	203.0	75.1	17.9	4.46
204	284.6	12.1	134.6	29.7	67.0	0.817	0.816	157.4	126.6	204.0	75.1	18.0	4.45
205	284.4	12.3	135.5	29.7	67.1	0.815	0.821	157.0	127.5	205.0	75.2	18.1	4.45
206	284.1	12.5	136.4	29.7	67.1	0.814	0.826	156.7	128.4	206.0	75.2	18.1	4.44
207	283.9	12.7	137.3	29.7	67.1	0.813	0.832	156.3	129.2	207.0	75.3	18.1	4.44
208	283.7	12.9	138.3	29.6	67.1	0.812	0.837	156.0	130.1	208.0	75.3	18.2	4.44
209	283.5	13.1	139.2	29.6	67.1	0.811	0.842	155.6	131.0	209.0	75.4	18.2	4.45
210	283.3	13.3	140.1	29.6	67.1	0.810	0.847	155.3	131.8	210.0	75.4	18.2	4.45
211	283.0	13.6	141.0	29.5	67.1	0.809	0.852	154.9	132.7	211.0	75.4	18.1	4.46
212	282.8	13.8	141.9	29.5	67.2	0.809	0.856	154.6	133.6	212.0	75.5	18.1	4.47
213	282.6	14.0	142.8	29.5	67.2	0.808	0.861	154.2	134.5	213.0	75.5	18.1	4.49
214	282.4	14.2	143.7	29.4	67.2	0.808	0.866	153.9	135.4	214.0	75.5	18.0	4.51
215	282.2	14.4	144.6	29.4	67.2	0.808	0.871	153.6	136.3	215.0	75.5	17.9	4.53
216	281.9	14.6	145.5	29.3	67.2	0.808	0.875	153.2	137.2	216.0	75.6	17.8	4.55
217	281.7	14.8	146.4	29.3	67.2	0.808	0.880	152.9	138.1	217.0	75.6	17.7	4.58
218	281.5	15.1	147.2	29.2	67.3	0.808	0.884	152.5	139.0	218.0	75.6	17.6	4.61
219	281.3	15.3	148.1	29.1	67.3	0.808	0.888	152.2	140.0	219.0	75.6	17.5	4.64
220	281.0	15.5	149.0	29.1	67.3	0.809	0.893	151.9	140.9	220.0	75.7	17.3	4.67
221	280.8	15.7	149.9	29.0	67.3	0.810	0.897	151.5	141.8	221.0	75.7	17.1	4.71
222	280.6	15.9	150.8	29.0	67.3	0.811	0.901	151.2	142.7	222.0	75.7	17.0	4.76
223	280.3	16.1	151.7	28.9	67.3	0.812	0.905	150.9	143.6	223.0	75.8	16.8	4.80
224	280.1	16.3	152.5	28.8	67.3	0.813	0.909	150.6	144.6	224.0	75.8	16.6	4.85
225	279.9	16.6	153.4	28.7	67.4	0.814	0.913	150.2	145.5	225.0	75.8	16.3	4.91
226	279.7	16.8	154.3	28.7	67.4	0.816	0.916	149.9	146.4	226.0	75.9	16.1	4.97
227	279.4	17.0	155.2	28.6	67.4	0.817	0.920	149.6	147.3	227.0	75.9	15.9	5.03
228	279.2	17.2	156.0	28.5	67.4	0.819	0.924	149.3	148.3	228.0	76.0	15.6	5.10
229	279.0	17.4	156.9	28.4	67.4	0.821	0.927	148.9	149.2	229.0	76.1	15.3	5.18
230	278.7	17.6	157.7	28.3	67.4	0.823	0.930	148.6	150.1	230.0	76.1	15.0	5.26