

OCU (#0333): Total of 125 orbits. $\lambda_o = 202^\circ$, $\lambda_g - \lambda_o = 278.9^\circ$, $\beta_g = 46.8^\circ$, $\Delta r = 3^\circ$, $\Delta \lambda_o = 5^\circ$.

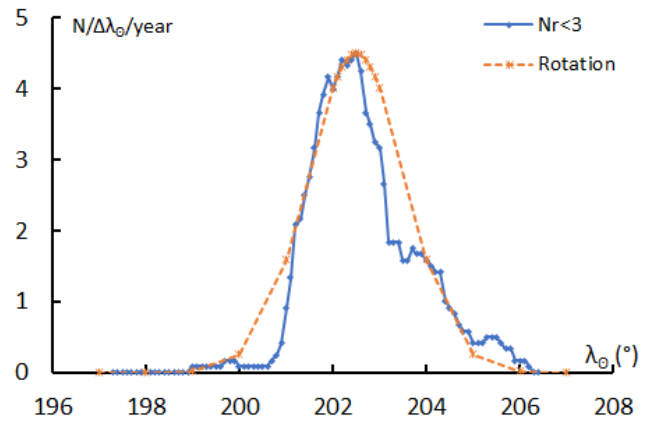
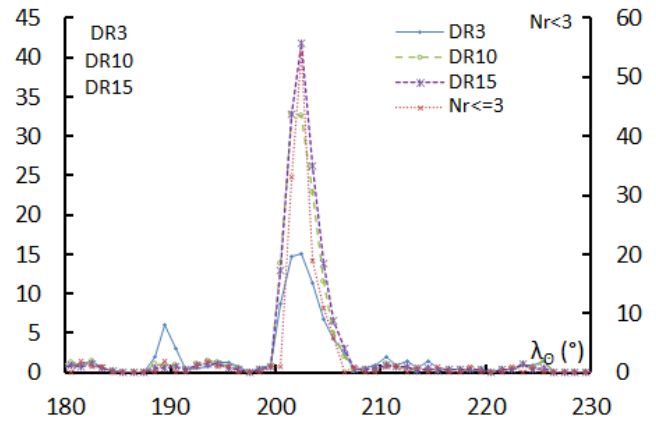
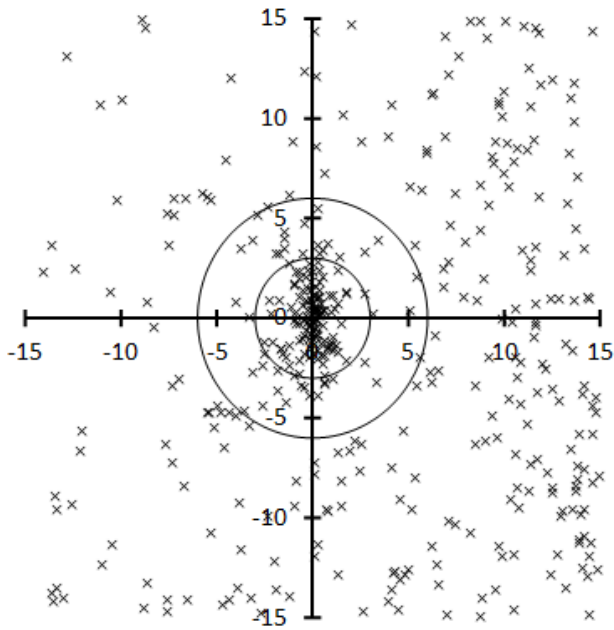


Table 1 – Number per year.

Year	N	Year	N
2007	3	2013	7
2008	5	2014	14
2009	17	2015	17
2010	11	2016	27
2011	4	2017	2
2012	12	2018	6

Table 2 – Activity profiles.

	λ_o	Max
Nr<=3	202.5	54
DR3	202.5	15.1
DR10	201.5	32.8
DR15	202.5	41.7

Table 3 – Evolution of the orbital parameters during the activity period.

λ_o	$\lambda_g - \lambda_o$	β_g	α_g	δ_g	v_g	e	q	i	ω	Ω	λ_{π}	β_{π}	a
197	275.5	46.8	132.1	66.9	56.4	0.999	0.993	101.9	171.2	197.0	18.8	8.6	691.4
198	276.2	46.8	134.6	66.5	56.2	0.984	0.991	101.7	170.0	198.0	20.0	9.8	60.39
199	276.8	46.7	137.1	66.0	56.0	0.969	0.989	101.5	168.7	199.0	21.3	11.0	31.81
200	277.4	46.7	139.6	65.5	55.8	0.955	0.986	101.3	167.5	200.0	22.5	12.3	21.70
201	278.0	46.7	141.9	65.0	55.6	0.940	0.983	101.0	166.2	201.0	23.7	13.5	16.53
202	278.7	46.7	144.2	64.5	55.4	0.927	0.981	100.8	164.9	202.0	24.9	14.8	13.39
202.1	278.7	46.7	144.4	64.4	55.4	0.925	0.980	100.8	164.8	202.1	25.0	15.0	13.14
202.2	278.8	46.7	144.7	64.3	55.4	0.924	0.980	100.8	164.6	202.2	25.1	15.1	12.90
202.3	278.8	46.7	144.9	64.3	55.3	0.923	0.980	100.8	164.5	202.3	25.3	15.2	12.67
202.4	278.9	46.7	145.1	64.2	55.3	0.921	0.979	100.7	164.4	202.4	25.4	15.3	12.45
202.5	279.0	46.7	145.3	64.2	55.3	0.920	0.979	100.7	164.2	202.5	25.5	15.5	12.24
202.6	279.0	46.7	145.6	64.1	55.3	0.919	0.979	100.7	164.1	202.6	25.6	15.6	12.03
202.7	279.1	46.7	145.8	64.1	55.3	0.917	0.978	100.7	164.0	202.7	25.7	15.7	11.83
202.8	279.2	46.7	146.0	64.0	55.2	0.916	0.978	100.7	163.8	202.8	25.9	15.9	11.64
202.9	279.2	46.6	146.2	64.0	55.2	0.915	0.978	100.6	163.7	202.9	26.0	16.0	11.46
203	279.3	46.6	146.4	63.9	55.2	0.913	0.977	100.6	163.6	203.0	26.1	16.1	11.28
204	279.9	46.6	148.6	63.3	55.0	0.900	0.974	100.4	162.2	204.0	27.3	17.5	9.77
205	280.5	46.6	150.7	62.7	54.8	0.888	0.970	100.2	160.9	205.0	28.5	18.8	8.63
206	281.1	46.5	152.7	62.1	54.6	0.875	0.967	99.9	159.5	206.0	29.7	20.2	7.74
207	281.8	46.5	154.7	61.5	54.4	0.863	0.962	99.7	158.1	207.0	30.9	21.6	7.03