

**NSU (#0488):** Total of 58 orbits.  $\lambda_o = 241.6^\circ$ ,  $\lambda_g - \lambda_o = 244.9^\circ$ ,  $\beta_g = 42.9^\circ$ ,  $\Delta r = 3^\circ$ ,  $\Delta \lambda_o = 5^\circ$ .

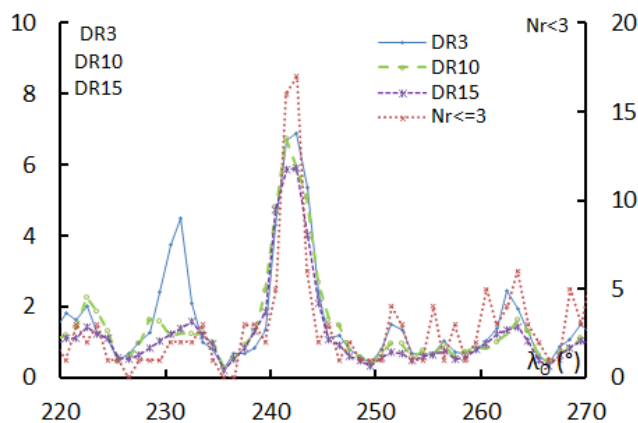
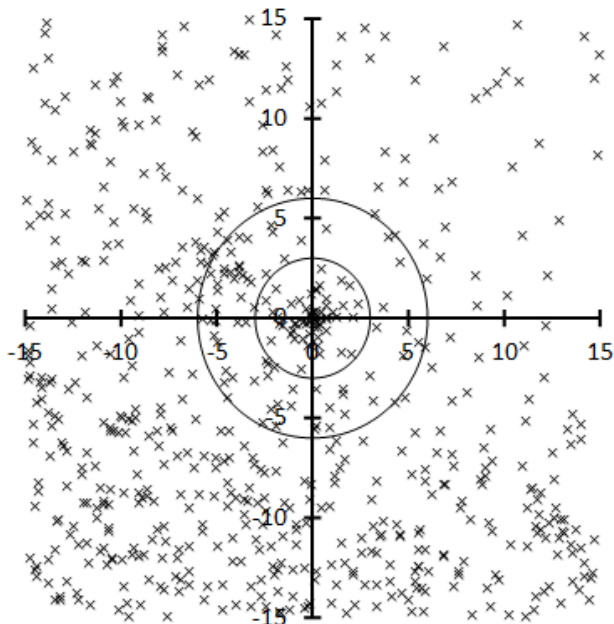


Table 1 – Number per year.

Year	N	Year	N
2007	5	2013	5
2008	2	2014	1
2009	8	2015	3
2010	5	2016	2
2011	8	2017	6
2012	5	2018	8

Table 2 – Activity profiles.

	$\lambda_o$	Max
Nr<=3	242.5	17.0
DR3	242.5	6.9
DR10	241.5	6.7
DR15	242.5	5.9

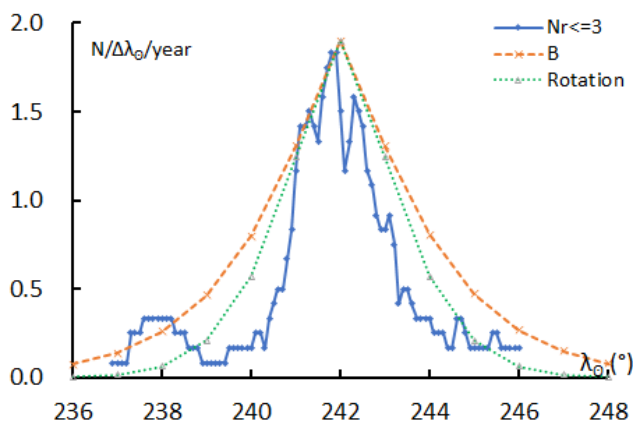


Table 3 – Evolution of the orbital parameters during the activity period.

$\lambda_o$	$\lambda_g - \lambda_o$	$\beta_g$	$\alpha_g$	$\delta_g$	$v_g$	$e$	$q$	$i$	$\omega$	$\Omega$	$\lambda_{\pi}$	$\beta_{\pi}$	$a$
235	244.5	43.9	139.8	62.3	50.8	0.748	0.788	94.8	238.3	235.0	47.4	-57.9	3.13
236	244.6	43.7	141.2	61.9	51.3	0.771	0.791	95.4	237.2	236.0	47.7	-56.8	3.46
237	244.6	43.6	142.5	61.4	51.9	0.794	0.794	96.1	236.2	237.0	48.0	-55.7	3.86
238	244.7	43.4	143.8	60.9	52.4	0.818	0.797	96.7	235.2	238.0	48.5	-54.6	4.39
239	244.8	43.3	145.1	60.4	52.9	0.843	0.800	97.4	234.2	239.0	48.9	-53.5	5.08
240	244.9	43.2	146.4	60.0	53.4	0.868	0.803	98.0	233.3	240.0	49.4	-52.5	6.07
241	244.9	43.0	147.6	59.5	54.0	0.893	0.806	98.6	232.4	241.0	50.0	-51.6	7.55
242	245.0	42.9	148.9	59.0	54.5	0.919	0.808	99.2	231.5	242.0	50.6	-50.6	10.03
243	245.1	42.7	150.1	58.5	55.0	0.946	0.811	99.8	230.7	243.0	51.2	-49.7	15.07
244	245.1	42.6	151.3	58.0	55.5	0.974	0.813	100.4	229.9	244.0	51.8	-48.8	30.72
245	245.2	42.4	152.4	57.5	56.1	1.001	0.816	101.0	229.2	245.0	52.5	-48.0	-574
246	245.3	42.3	153.6	57.0	56.6	1.030	0.818	101.6	228.4	246.0	53.2	-47.1	-27.4
247	245.4	42.2	154.7	56.5	57.1	1.059	0.820	102.2	227.7	247.0	53.9	-46.3	-13.9
248	245.4	42.0	155.9	56.0	57.6	1.089	0.822	102.8	227.1	248.0	54.6	-45.5	-9.29
249	245.5	41.9	157.0	55.4	58.2	1.119	0.824	103.4	226.4	249.0	55.4	-44.8	-6.95
250	245.6	41.7	158.1	54.9	58.7	1.149	0.826	103.9	225.8	250.0	56.1	-44.1	-5.53