

ETA (#0031): Total of 2351 orbits. $\lambda_o = 46.3^\circ$, $\lambda_g - \lambda_o = 293.3^\circ$, $\beta_g = 7.7^\circ$, $\Delta r = 3^\circ$, $\Delta \lambda_o = 10^\circ$.

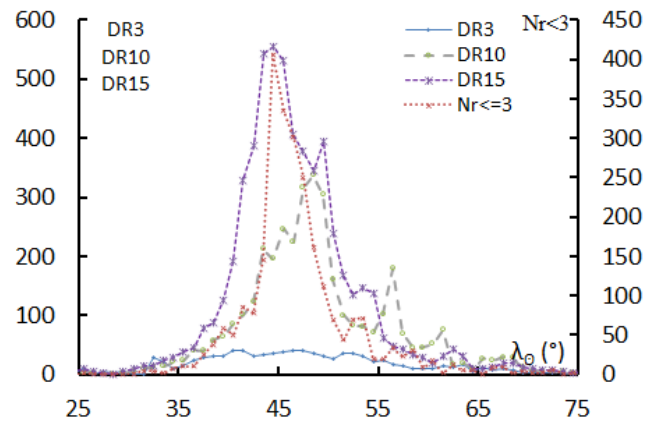
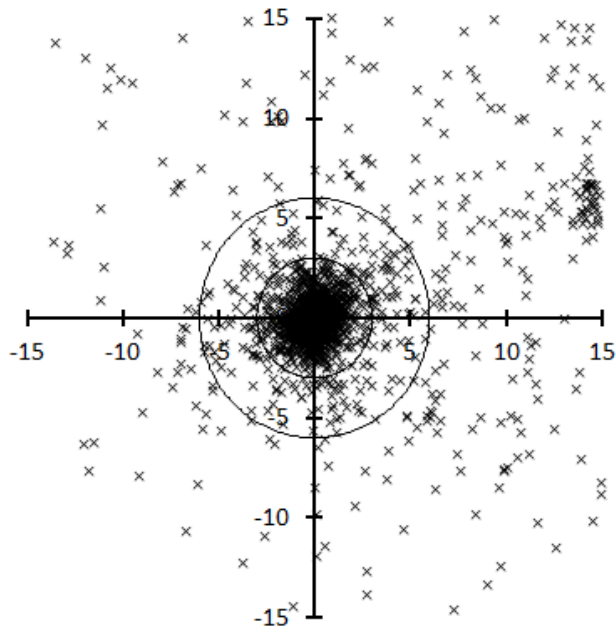


Table 1 – Number per year.

Year	N	Year	N
2007	84	2013	550
2008	104	2014	224
2009	189	2015	137
2010	198	2016	159
2011	120	2017	265
2012	166	2018	155

Table 2 – Activity profiles.

	λ_o	Max
Nr<=3	44.5	406
DR3	40.5	41.5
DR10	48.5	337.7
DR15	44.5	554.9

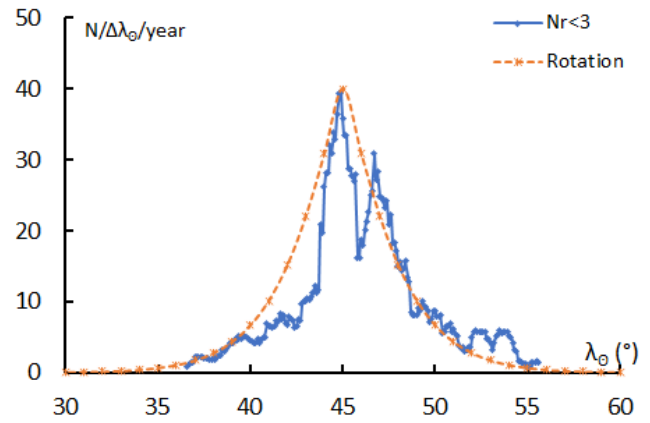


Table 3 – Evolution of the orbital parameters during the activity period.

λ_o	$\lambda_g - \lambda_o$	β_g	α_g	δ_g	v_g	e	q	i	ω	Ω	λ_{π}	β_{π}	a
26	298.4	6.5	324.5	-7.3	64.0	0.960	0.429	164.6	80.3	26.0	306.0	15.2	10.80
27	298.2	6.6	325.2	-6.9	64.0	0.959	0.437	164.5	81.1	27.0	306.2	15.3	10.73
28	297.9	6.6	325.9	-6.6	64.1	0.958	0.444	164.5	81.9	28.0	306.4	15.4	10.67
29	297.7	6.7	326.6	-6.3	64.2	0.958	0.451	164.4	82.8	29.0	306.5	15.5	10.62
30	297.4	6.8	327.3	-6.0	64.3	0.957	0.458	164.4	83.6	30.0	306.7	15.5	10.58
31	297.2	6.8	328.0	-5.7	64.4	0.956	0.466	164.3	84.4	31.0	306.8	15.6	10.54
32	296.9	6.9	328.7	-5.4	64.4	0.955	0.473	164.3	85.2	32.0	307.0	15.7	10.51
33	296.7	6.9	329.4	-5.1	64.5	0.954	0.481	164.2	86.0	33.0	307.1	15.8	10.49
34	296.5	7.0	330.0	-4.7	64.6	0.953	0.488	164.2	86.9	34.0	307.3	15.8	10.47
35	296.2	7.1	330.7	-4.4	64.7	0.953	0.495	164.1	87.7	35.0	307.4	15.9	10.46
36	296.0	7.1	331.4	-4.1	64.8	0.952	0.503	164.1	88.5	36.0	307.5	15.9	10.46
37	295.7	7.2	332.1	-3.8	64.8	0.951	0.510	164.0	89.4	37.0	307.7	16.0	10.46
38	295.5	7.3	332.8	-3.4	64.9	0.951	0.518	164.0	90.2	38.0	307.8	16.0	10.48
39	295.2	7.3	333.4	-3.1	65.0	0.950	0.525	163.9	91.1	39.0	307.9	16.1	10.49
40	295.0	7.4	334.1	-2.8	65.1	0.949	0.533	163.8	91.9	40.0	308.0	16.1	10.52
41	294.7	7.5	334.8	-2.5	65.2	0.949	0.541	163.8	92.8	41.0	308.1	16.2	10.55
42	294.5	7.5	335.5	-2.1	65.2	0.948	0.548	163.7	93.6	42.0	308.2	16.2	10.59
43	294.3	7.6	336.2	-1.8	65.3	0.948	0.556	163.7	94.5	43.0	308.3	16.3	10.63
44	294.0	7.7	336.8	-1.5	65.4	0.947	0.564	163.6	95.3	44.0	308.4	16.3	10.69
45	293.8	7.7	337.5	-1.1	65.5	0.947	0.571	163.6	96.2	45.0	308.5	16.3	10.75
46	293.5	7.8	338.2	-0.8	65.6	0.947	0.579	163.5	97.1	46.0	308.6	16.3	10.82

Table 3 – Continued, evolution of the orbital parameters during the activity period.

λ_o	$\lambda_g - \lambda_o$	β_g	α_g	δ_g	v_g	e	q	i	ω	Ω	λ_{Π}	β_{Π}	a
47	293.3	7.8	338.8	-0.4	65.6	0.946	0.586	163.5	98.0	47.0	308.7	16.3	10.90
48	293.0	7.9	339.5	-0.1	65.7	0.946	0.594	163.4	98.8	48.0	308.8	16.4	10.99
49	292.8	8.0	340.2	0.2	65.8	0.946	0.602	163.4	99.7	49.0	308.9	16.4	11.08
50	292.5	8.0	340.9	0.6	65.9	0.946	0.609	163.3	100.6	50.0	308.9	16.4	11.19
51	292.3	8.1	341.5	0.9	65.9	0.945	0.617	163.3	101.5	51.0	309.0	16.4	11.31
52	292.1	8.2	342.2	1.3	66.0	0.945	0.625	163.2	102.4	52.0	309.1	16.4	11.44
53	291.8	8.2	342.9	1.6	66.1	0.945	0.632	163.2	103.3	53.0	309.1	16.3	11.58
54	291.6	8.3	343.5	1.9	66.2	0.945	0.640	163.1	104.2	54.0	309.2	16.3	11.73
55	291.3	8.3	344.2	2.3	66.3	0.946	0.648	163.1	105.1	55.0	309.3	16.3	11.89
56	291.1	8.4	344.9	2.6	66.3	0.946	0.655	163.1	106.0	56.0	309.3	16.3	12.07
57	290.8	8.5	345.5	3.0	66.4	0.946	0.663	163.0	106.9	57.0	309.4	16.2	12.27
58	290.6	8.5	346.2	3.3	66.5	0.946	0.670	163.0	107.8	58.0	309.4	16.2	12.48
59	290.3	8.6	346.8	3.7	66.6	0.947	0.678	162.9	108.7	59.0	309.5	16.2	12.72
60	290.1	8.6	347.5	4.0	66.7	0.947	0.685	162.9	109.6	60.0	309.5	16.1	12.97
61	289.9	8.7	348.2	4.4	66.7	0.948	0.693	162.8	110.6	61.0	309.6	16.1	13.24
62	289.6	8.8	348.8	4.7	66.8	0.948	0.700	162.8	111.5	62.0	309.6	16.0	13.54
63	289.4	8.8	349.5	5.1	66.9	0.949	0.708	162.7	112.4	63.0	309.6	15.9	13.87
64	289.1	8.9	350.2	5.4	67.0	0.950	0.715	162.7	113.3	64.0	309.7	15.9	14.22
65	288.9	8.9	350.8	5.8	67.1	0.951	0.722	162.6	114.3	65.0	309.7	15.8	14.61
66	288.6	9.0	351.5	6.1	67.1	0.951	0.730	162.6	115.2	66.0	309.7	15.7	15.04